



COSMOS

A LIFETIME EXPERIENCE

BROCHURE

The Yacht - Cosmos

[KOS . MOS]

Derives from the ancient Greek word κόσμος, which is another word for world or universe. Cosmos invites you to explore the Aegean's crystal-clear waters and take a deep dive into the Greek hospitality and delicacies.

More than a vessel, Cosmos is a world of her own, a floating sanctuary where heritage, elegance, and authenticity come together. From sun-drenched decks overlooking endless blue horizons to intimate evenings filled with seasonal Greek flavours, every moment on board is thoughtfully curated to reflect the true spirit of Greece. Cosmos is not simply a journey across islands, but an immersion into culture, comfort, and the art of living well.

25m · 4 Cabins · 8 Guests · 4 Crew





Karaskovaro

[KA . RA . VO . SKA . RO]

A TRADITIONAL WOODEN VESSEL WITH ELLIPTICAL STERN

Cosmos first set sail in 1979, originating from the Mavrikos shipyards of Syros Island. Originally, she was built as the private yacht for a renowned shipowner of that era, who harbored a profound love for Greece, the sea, and fine wine. In 2010, Cosmos fell into a state of disrepair, left abandoned and weathered. Our first step onboard in 2019 sparked love at first sight. We decided to acquire and embark on a transformative journey.

Through extensive redesign, we brought her back to life, inviting people to step aboard and immerse themselves in our unique world. Consisting of 4 cabins, our Cosmos can warmly accommodate up to 8 guests, who can explore its interior and witness the endless blue to its full glory.



Specifications

Boat type

Traditional motor sailer
(Liberty and Karavoskaro)

Fuel capacity

8000.00 L

Length

24.80 m (81.36 ft)

Flag

Greece

Deck

Burma teak

Hull & superstructure

Samos/Thassos pine wood and Iroko

Water capacity

4000.00 L

Mainsail

Full batten

Genoa

Furling

Berths

8

Crew

Captain, Chef, Steward/ess,
Deck hand in separate crew quarters

Interior

Mahogany and Iroko

Engine

2x351 Hp Cummins

Beam

6.50 m (21.33 ft)

Draft

2.60 m (8.53 ft)

Draught

8 ft

Bathrooms

4 (en-suite)

Cabins

4

Accommodation

- Master cabin with queen bed and indoor Jacuzzi
 - VIP cabin with queen bed and lounge sofa
 - One double cabin
 - One twin cabin
- All cabins feature private facilities (4 en-suite bathrooms)

Build & Refit

- 1979 – MAVRIKOS Bros. Shipyard at Ermoupoli, Syros, Greece
- 2015 - 2016 – Major hull re-construction, Complete interior and deck re-modeling
- 2019 - 2020 – Full upgrade exterior and interior

Onboard Equipment

- Air conditioning
- Autopilot
- Depth meter
- GPS plotter
- Generator
- Solar panels
- Wind instruments
- VHF
- Deck speakers
- Electric fridge
- Hydraulic windlass
- Hot water
- Shore power (220V)
- 12V outlets
- USB ports in all cabins
- Media system
- Espresso machine
- Tender (30 HP)
- Water toys





Aegean

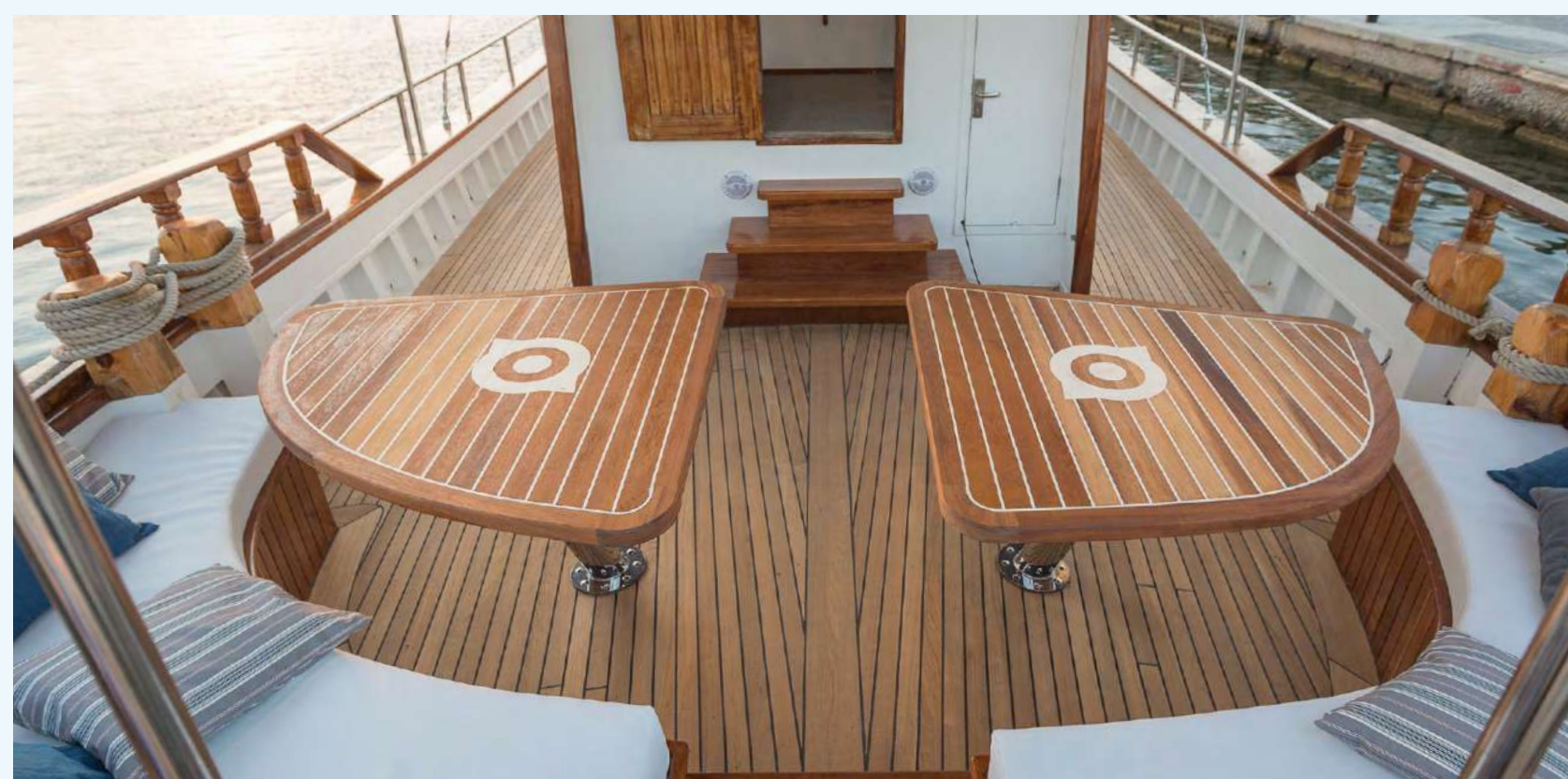
[AE . GE . AN]

The Aegean unfolds in quiet sophistication, a sea of endless blue framed by sun-washed villages and sculpted coastlines. Here, elegance is not imposed, but inherited through history, architecture, and the gentle rhythm of island life.

As Cosmos glides across these storied waters, each horizon reveals a harmony of culture, nature, and timeless beauty, an experience defined not by excess, but by grace.

Luxury at Sea

Life on Cosmos moves with the rhythm of the Aegean. Designed with utmost elegance and sophistication, our vessel is a feast for the eyes. The dining room is an exquisite setting with an all-day buffet and bar, perfectly complementing the luxurious décor. Imagine yourself enjoying sumptuous meals accompanied by your favorite melody, that of the sea or your favorite song.



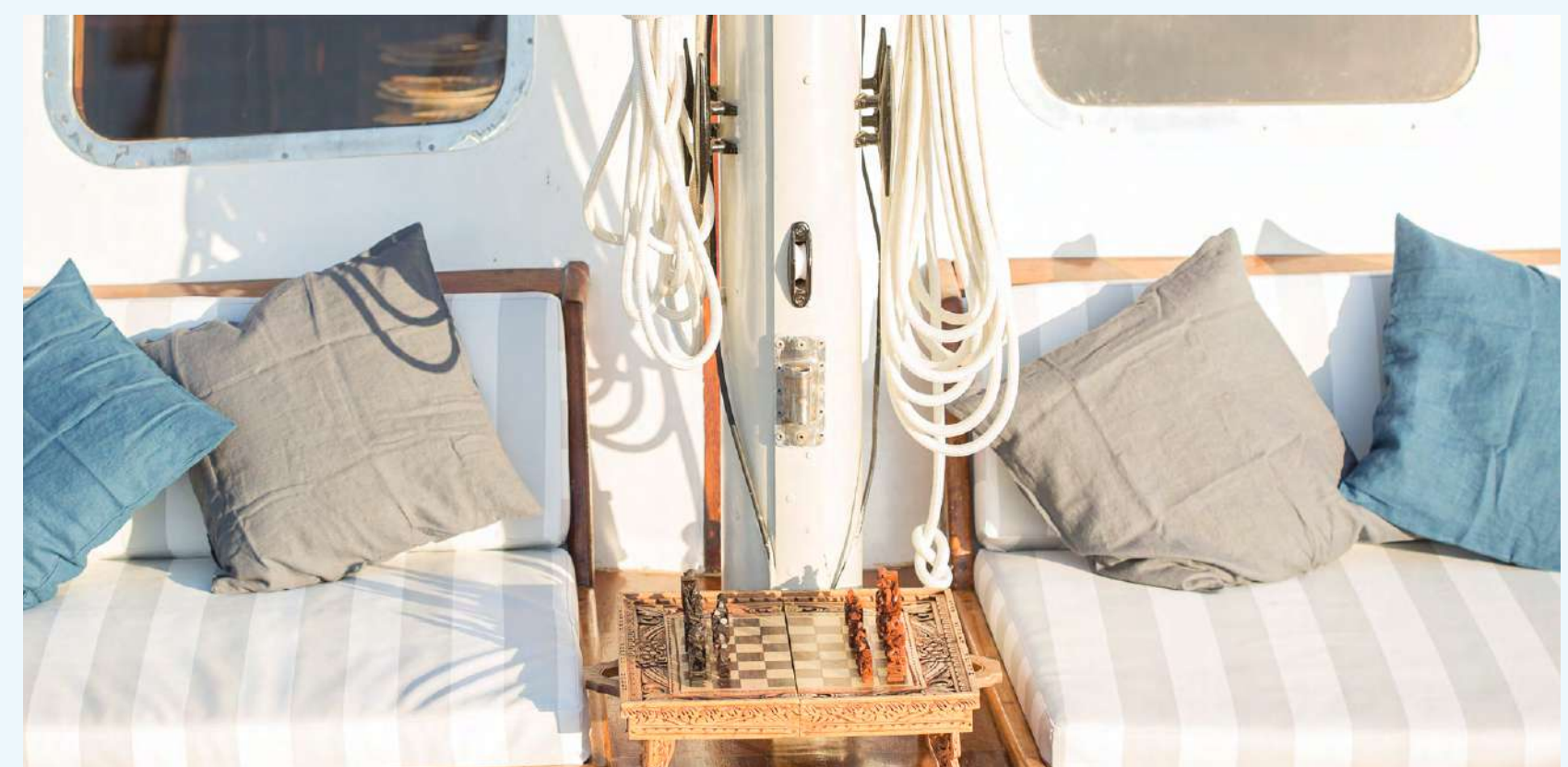


Unparalleled *Comfort*

Aboard our luxurious Cosmos, our travelers will discover comfort that transcends the ordinary. From the moment they step on deck, every detail has been meticulously crafted to envelop our visitors in opulence. Plush furnishings and sumptuous amenities invite guests to relax and unwind in style, while the gentle rocking of the boat and the soothing sounds of the sea create a tranquil ambiance.

In our floating haven, privacy is paramount. Bask in the sun on private sundecks or retreat to a serene corner of the vessel desire. The supreme comfort of our luxurious vessel extends to every aspect of the journey, promising an experience that transcends the boundaries of relaxation and lavishness.

Our travelers will feel pampered and indulged as they enjoy themselves and relax in our Cosmos, surrounded by the finest materials, creating a homelike feeling. The essence of lavender feels the atmosphere with harmony and calmness.



The - Cabins

Within Cosmos, each cabin is conceived as a private haven, a space where craftsmanship, comfort, and calm converge. Natural wood textures, soft Greek linens, and gentle lighting create an atmosphere that feels warm and restorative, echoing the simplicity and beauty of the Aegean.

Designed for unhurried mornings and peaceful nights, the cabin invites you to slow down and surrender to the rhythm of the sea. It is not merely a place to rest, but a sanctuary where privacy is cherished and every detail reflects the essence of Greek φιλοξενία, heartfelt hospitality that makes you feel truly at home.

1 Master · 1 VIP · 1 Double · 1 Twin

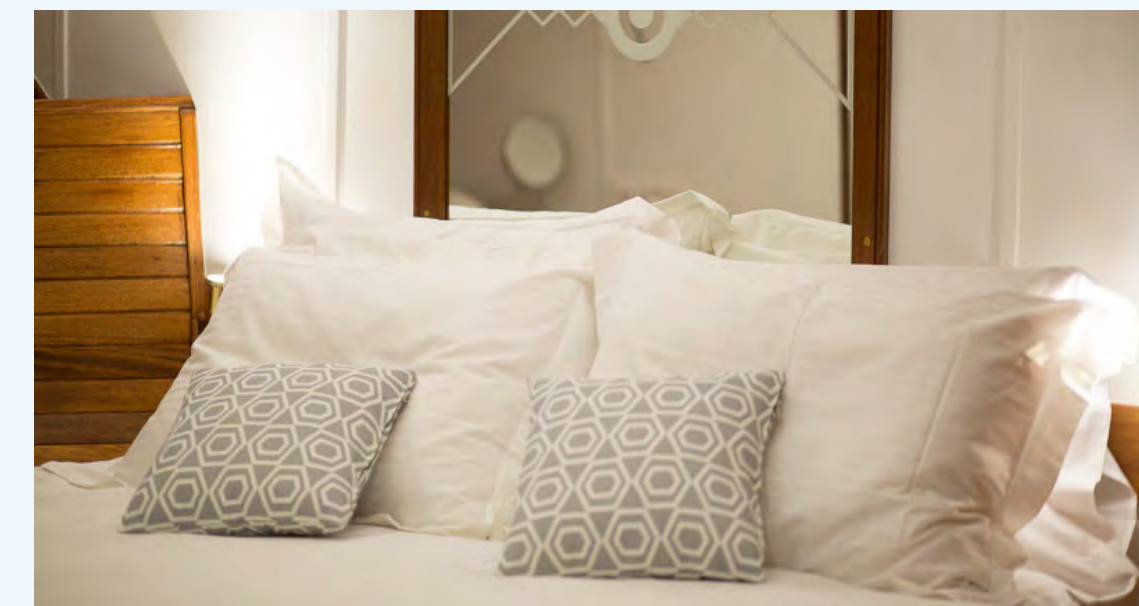




A sanctuary of indulgence at sea.

Master Cabin

Featuring a queen bed and a private indoor Jacuzzi, the Master Cabin is designed for those who seek space, serenity, and quiet luxury. Warm wood finishes and soft Greek linens create an atmosphere of refined comfort, while the Jacuzzi invites slow evenings of relaxation after sun-drenched days in the Aegean. A retreat within your journey.



Comfort with generous elegance.

VIP Cabin

The VIP Cabin offers a queen bed and a spacious sofa lounge, creating a beautifully balanced setting for rest and privacy. Whether enjoying a quiet morning coffee or unwinding with a book as the sea gently rocks outside, this cabin combines understated sophistication with the warmth of handcrafted details and natural materials.

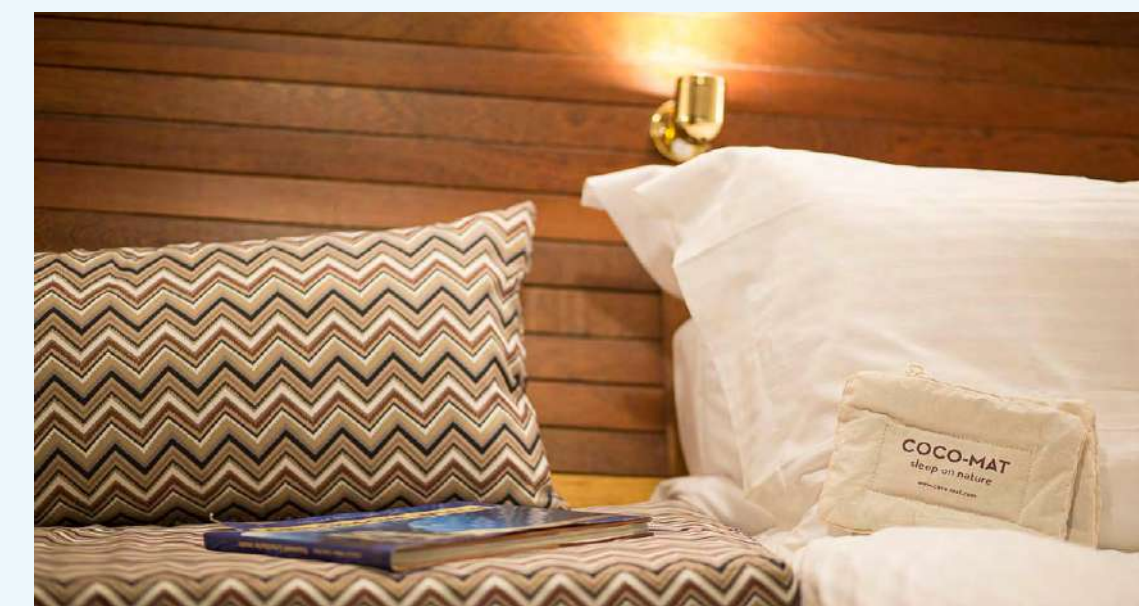
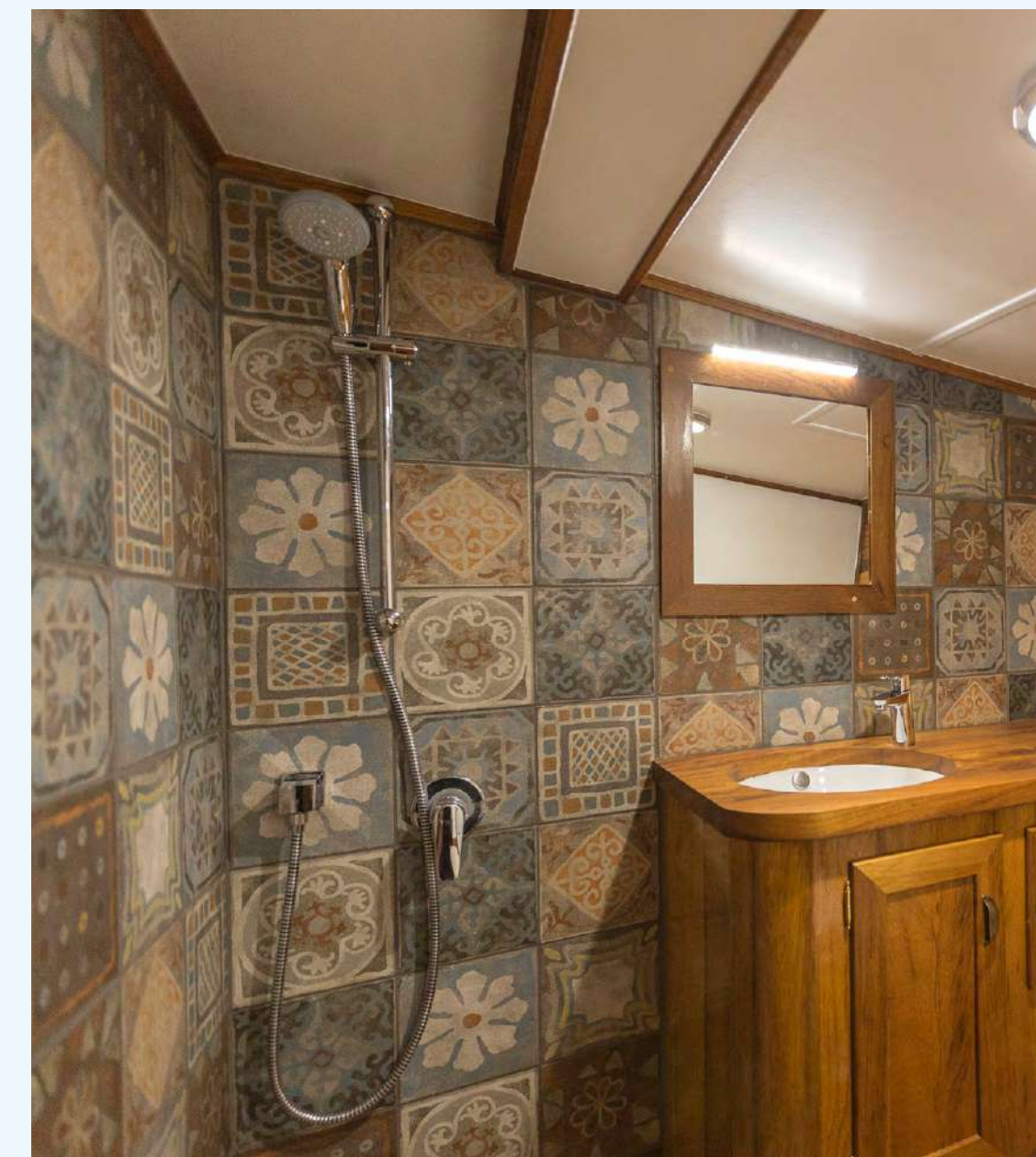




Intimate and effortlessly refined.

Double Cabin

With its comfortable double bed and thoughtfully curated interior, the Double Cabin offers a serene escape inspired by Greek simplicity. Soft textures, natural linens, and calming tones create a restful atmosphere — perfect for couples seeking quiet moments between island explorations.





Shared comfort, timeless charm.

Twin Cabin

The Twin Cabin features two single beds, making it ideal for friends or family travelling together. Designed with the same attention to detail and harmonious materials found throughout Cosmos, it offers a welcoming and tranquil space to unwind, recharge, and feel at home on the water.



Philoxenia

[PHI . LO . XE . NIA]

Derives from the ancient Greek word φιλοξενία, which means an act of hospitality and welcome. Φιλοξενία is composed of two Greek words, φίλος (philos) meaning friend and ξένος (xenos) meaning stranger.





Philoxenia

In our Cosmos, you experience the true essence of Greece's natural toiletries, from the Greek brand APIVITA. Our exclusive amenities include locally sourced Greek products and linen, enhancing the voyage with a touch of authenticity and comfort. Our handpicked products are crafted with care, infused with the essence of Mediterranean herbs and botanicals, leaving you refreshed and revitalized after a day of exploring the islands and crystal-clear waters.

As you retire to your cabin, you'll be greeted by the finest Greek linen, renowned for its softness and quality. COCO-MAT products are made from natural materials. Drift into a peaceful slumber on sheets that have been carefully selected to provide the highest comfort, reminiscent of the luxury and relaxation that Greece is known for.

Are you ready to feel the essence of Greece surrounding you at every moment?



Culinary *Delight*

Imagine savoring the exquisite flavors of Greece, expertly prepared by a skilled chef aboard our luxurious Cosmos. As we set sail on the crystal-clear waters of the Aegean, your taste buds embark on a unique and unparalleled culinary adventure. Dining on our Cosmos, surrounded by the idyllic Greek islands, is not just a meal; it's an experience of the senses.

The setting sun bathes the vessel in a warm, golden light as you savor the last bites of our Greek delicacies. From the captivating scenery to the delectable cuisine, every moment aboard our Cosmos is a celebration of the beauty and taste of Greece, a journey that lingers in your memory long after the last course has been served.





Embracing *Sustainable* Tourism

Our commitment to sustainable tourism is not just a statement but a core value that guides our every decision. As you explore the world's most stunning destinations aboard our Cosmos, you can do so with the knowledge that you are traveling responsibly and leaving a positive mark on the planet. In our Cosmos luxury and sustainability harmoniously coexist. Our timber is sourced from responsibly managed forests, and we engage local craftsmen in the reconstruction process.

The food served from our chef is created from seasonal produce, sourced locally from the ports we visit. In an effort to further reduce our footprint, all our cleaning products are certified as biodegradable, and renewable energy from photovoltaic batteries powers the ship's energy needs. We seek to make a positive impact on local communities by contributing to the cleanliness of our seas and marine environment through various volunteer activities.



Explore *the* Wonders of Greece

From her home port at Alimos Marina in Athens, Cosmos sets sail toward the timeless beauty of the Greek islands. Whether cruising the sheltered harbours of the Saronic Gulf or the open horizons of the Cyclades, each journey unfolds at an unhurried pace.

Days are shaped by crystalline waters and sunlit decks; evenings by seasonal cuisine and the quiet glow of the Aegean at anchor. Aboard Cosmos, Greece is not simply visited — it is experienced from the sea.

The SARONIC Splendours

Sail through the timeless beauty of the Saronic Gulf, where history, culture, and coastal elegance unfold at every anchorage.

From the ancient theatre of Epidaurus to the neoclassical charm of Nafplion and the cosmopolitan grace of Hydra and Spetses, each destination reveals a different facet of Greece. Crystal waters, sun-washed villages, and authentic island life accompany you throughout the journey, a curated voyage where every stop feels both intimate and unforgettable.



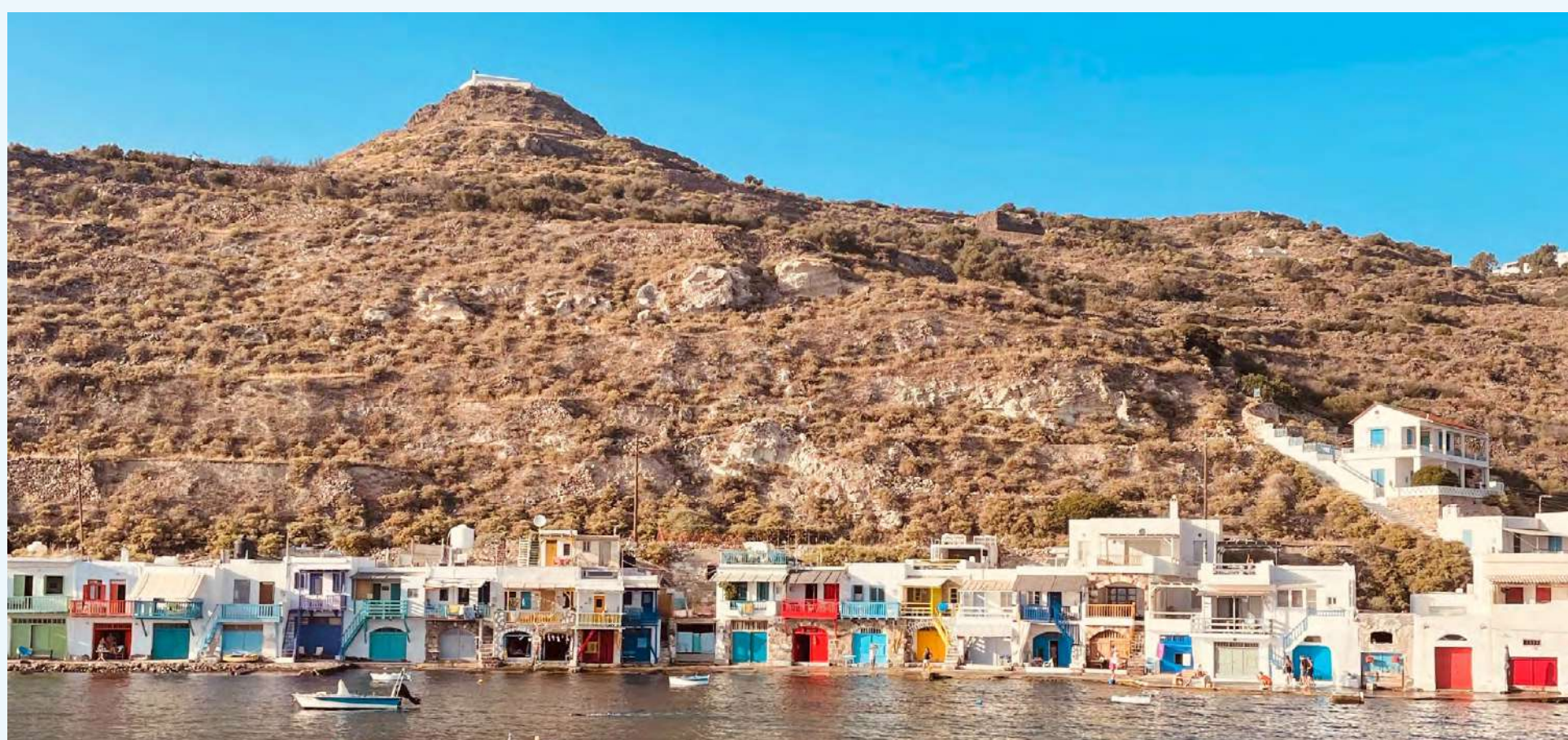
Anchorage

- 1 Ancient Epidaurus
- 2 Hydra
- 3 Nafplion
- 4 Spetses/Porto Cheli
- 5 Poros
- 6 Aegina
- 7 Alimos, Athens

The Jewels of CYCLADES

Cruise through the luminous waters of the Cyclades, where sculpted coastlines, whitewashed villages, and golden sunsets define the horizon.

From the raw beauty of Polyaiagos and Sarakiniko to the refined charm of Sifnos, Serifos, and Kea, each island reveals its own rhythm and character. Anchored in turquoise bays and historic harbours, this voyage invites you to experience Greece at its most iconic, authentic, timeless, and effortlessly captivating.





Anchorage

- 1 Kythnos
- 2 Sifnos
- 3 Polyaiagos-Sarakiniko
- 4 Milos
- 5 Serifos
- 6 Kea
- 7 Alimos, Athens

COSMOS

A LIFETIME EXPERIENCE

 +33 6 85 29 12 58

 charter-cosmos.com

 [cosmos_yacht](https://www.instagram.com/cosmos_yacht)